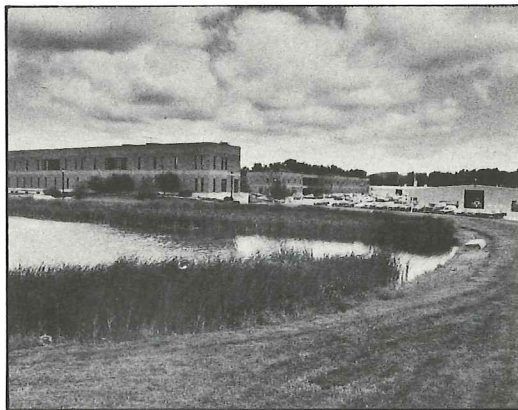


DIRECTIONS TO ETTC

From Toledo Airport: Turn right onto SR 2, go to I-475 South (Exit 8); take I-475 to I-75 South to US Rt. 224 East (Findlay Exit 159); turn left onto 224 East and go 7.5 miles to ETTC.

From Detroit Airport: Take I-94 West (Exit 198) to I-275 South (Exit 17); take I-275 to I-75 South (Exit 20); take I-75 South to US Rt. 224 East and proceed as stated above.

From Columbus Airport: Take I-270 North to US Rt. 23 North (Exit 23); take 23 to SR 15 to I-75 North; take I-75 North to SR 12 (Exit 157); turn right onto SR 12; take SR 12 to US Rt. 224 East and proceed as stated above.

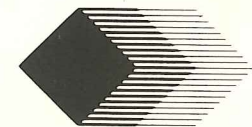
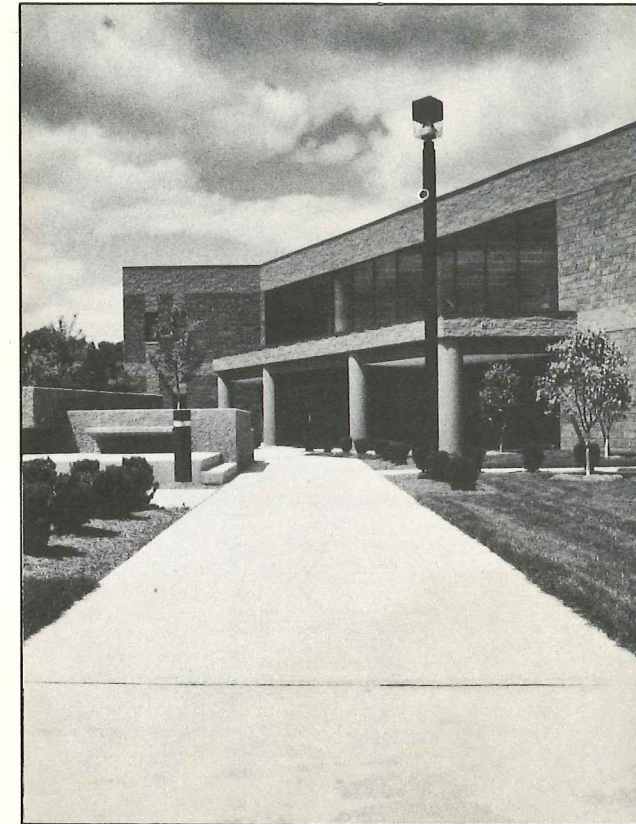


Environmental Treatment and Technologies Corp.

16406 U.S. Route 224 East
P.O. Box 551
Findlay, Ohio 45839-0551
419-423-3529

Subsidiaries:
O.H. Materials Corp.
Environmental Testing and
Certification Corp.

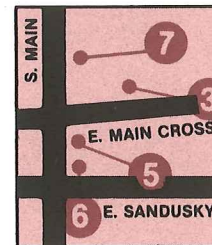
WELCOME TO



ETTC



DOWNTOWN



ACCOMMODATIONS

- A** **Holiday Inn** 423-8212
820 Trenton Ave.
- B** **Imperial House** 423-7171
1305 W. Main Cross St.
- C** **Knights Inn** 424-1133
1901 Broad Ave.

RESTAURANTS

- 1** **China Gate** 422-4396
1630 Tiffin Ave.
- 2** **Dark Horse** 423-2201
3100 N. Main St.
- 3** **The Gathering** 422-5930
114 E. Main Cross St.
- 4** **The Rocking U** 422-6402
318 W. Main Cross St.
- 5** **Way Back When** 424-0894
407 S. Main St.
- 6** **Waldo Peppers** 422-7000
411 S. Main St.
- 7** **Wine & Roses** 422-6600
235 S. Main St.

