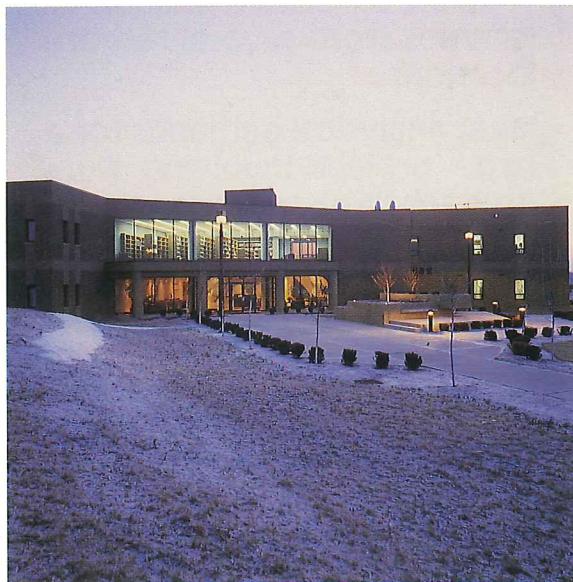


Analytical Capabilities

ETC's analytical services are directed at the accurate measurement and safe management of toxic chemicals and hazardous wastes. Certain analytical procedures are performed at all network locations. These procedures are those considered to be environmental industry basics. Other procedures, products and services are more specialized and are performed at selected facilities. All analyses are performed according to USEPA and/or the appropriate state procedures.

The following chart outlines the analytical capabilities at ETC's six laboratories:

Service	New Jersey	Louisiana	California	Ohio	Florida	Minnesota
Emergency Turnaround			✓	✓	✓	✓
GC/MS-VOA	✓	✓	✓	✓		
GC/MS-Semi-VOA	✓	✓	✓	✓		
GC-VOA	✓	✓	✓	✓	✓	✓
GC/Semi-VOA	✓	✓	✓	✓	✓	✓
GC-Pesticides/PCB's	✓	✓	✓	✓	✓	✓
Metals-ICP/AA	✓	✓	✓	✓	✓	✓
Conventionals	✓	✓	✓	✓	✓	✓
EPTOX/TCLP	✓	✓	✓	✓	✓	✓
CA Title 22	✓		✓			
EPA/CLP	✓	✓				
NJ ECRA	✓	✓		✓		
Appendix VIII, IX	✓					
Dioxin	✓					
Waste Analysis			✓	✓	✓	✓
Mobile Laboratory	✓	✓	✓	✓	✓	✓



Call the Environmental Testing and Certification Corp. laboratory near you or complete the enclosed postage-paid card to find out firsthand how much we appreciate clients who needed analytical results yesterday.

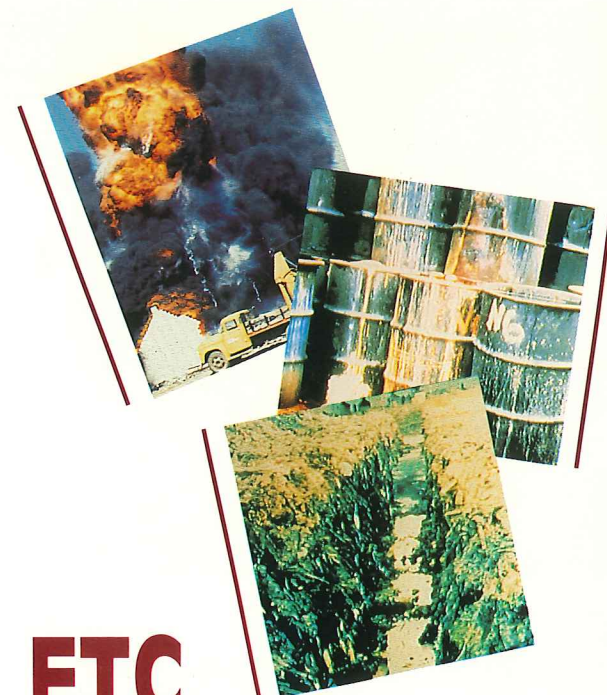
Environmental Testing and Certification Corp. Laboratories.
P.O. Box 1404
Findlay, OH 45839-0551
Phone: 800-822-3882

3245 Winpark Dr.
New Hope, MN 55427
Phone: 612-593-5993

P.O. Box 1238
Clermont, FL 32711
Phone: 904-394-8605



A subsidiary of
Environmental Treatment and Technologies Corp.



ETC APPRECIATES CLIENTS

Who Needed Analytical Results Yesterday and Sent the Samples Today



The Environmental Testing and Certification Corp. laboratories in Minneapolis, Minnesota; Findlay, Ohio, and Clermont, Florida, offer analytical services 24-hours a day, seven days a week. We consistently provide quality analysis quickly because our clients need the data to make critical decisions about the best method for managing hazardous waste. Consequently each of our three laboratories has been staffed, equipped and organized to perform our services when they are needed and within very rigid deadlines.

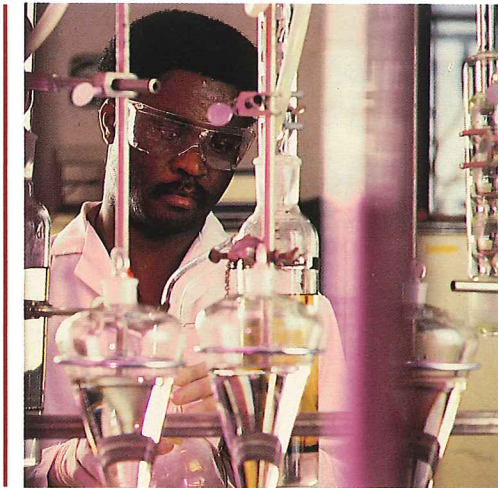
In addition to these three facilities, we also have the added capacity from our three other laboratories in Edison, New Jersey; Baton Rouge, Louisiana, and Santa Rosa, California, to:

- Produce consistent analysis of samples from several remote locations.
- Meet analytical demands for a large project involving hundreds or thousands of samples.

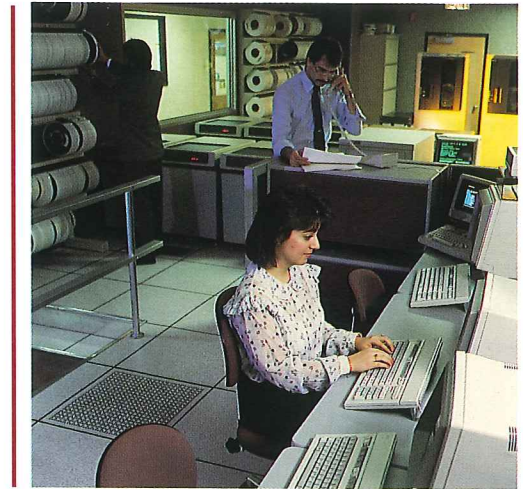
We Learned By Doing

Our specialized services, include:

- Quick turnaround from the time the sample arrives until sample analysis and report preparation are completed.
- A schedule and the costs of services with a commitment to adhere to both before analysis begins.
- Analytical results performed within the appropriate EPA protocols, using the latest approved editions.



- Sample tracking so that we can tell you the status of your work at any point in time.
- Laboratories which can accommodate waste, ground and drinking water as well as hazardous waste in complex matrices.



- Several reporting options are available, including verbal and fax, all litigation quality.
- Data management capabilities to evaluate and consolidate thousands of analytical results and translate them into workable management tools.